

# PROVA

REHEARSAL



METEHAN ÖZCAN 12.10-25.11.2023 VERSUS ART PROJECT

CURATOR: MERVE ELVEREN

“To appear like others actually suits the flâneur. After all, thanks to this anonymity and change of attire, he can enter and exit any place he wants without being noticed, and can observe in any way he desires... There is no place forbidden to him in spatial, moral, or cultural terms.”\*

## REHEARSAL

The word rehearsal, encompassing meanings such as ‘to test,’ ‘to confirm,’ ‘to put to the test,’ ‘to try,’ and ‘to examine,’ is rooted in the Latin verb probare. The first three meanings are based on the preparation for a likely experience - a kind of inspection; closely related to repetition. While repetitions may show similarities, each one is unique. The meanings of ‘to try’ and ‘to examine’ distance the word from connotations of control and repetition; they correspond to the ability for careful observation, flexibility, and being able to adapt as needed. Considering the processes it has gone through until it gained its current uses and the meanings it encompasses, it can be said that rehearsal is still in a continuous state of transformation: open to rethinking and rearrangement.

Metehan Özcan’s exhibition Rehearsal at Versus Art Project offers a comprehensive overview of Özcan’s practice. The new productions spread across different rooms of the exhibition space, infiltrating between the artist’s past works, works of other artists, Özcan’s archive, and personal traces from the Istanbul-Ankara-Izmir periods. A photo from 1978, stacked images, a bathroom tile, room keys, hotel room photographs, anonymous spaces - familiar places, concealed memories, visions for the future... The juxtaposition of works and objects in Rehearsal forms a bridge between the private and the public.

Rehearsal is constructed as a memory space that is constantly dispersed and reassembled, revealing Özcan’s thought processes, rather than being a personal exhibition. Current works and those unearthed from the archive, as reference points, allow for a reinterpretation of the artist’s practice and the emergence of invisible narratives. The exhibition can also be seen as an open studio. The room where Özcan conducts his work, by piling it up in the space, creates a space where the image is experienced through different presentations and display forms, continuing the production within the exhibition space.

**-Merve Elveren**

\* Asuman Suner, *Hong Kong-İstanbul: Şehri Şahsileştirmek* (İstanbul: Metis Yayınları, 2018), 20.

“Başkaları gibi görünmek esasen flâneur’ün işine gelir. Zira bu anonimlik ve tebdili kıyafet sayesinde istediği her yere fark edilmeden girip çıkabilir, istediği şekilde gözlem yapabilir... Mekânsal, ahlaki ya da kültürel anlamda ona yasaklamış hiçbir yer yoktur.”\*

## PROVA

‘Test etmek’, ‘teyit etmek’, ‘sınamak’, ‘denemek’ ve ‘incelemek’ anlamlarını barındıran prova sözcüğünün kökeni, Latince probare fiiline dayanır. Kelimenin ilk üç anlamı yaşanması muhtemel bir deneyimin hazırlığını yapabilme -bir tür denetleme- üstüne kuruludur; tekrarla yakın ilişkilidir. Tekrarlar benzerlik gösterse de her biri kendine özgüdür. ‘Denemek’ ve ‘incelemek’ anlamları ise sözcüğü denetim ve tekrarla ilgili çağrışımlardan uzaklaştırır; dikkatli bir gözlem yeteneğine, esnek olmaya, icabında kılıktan kılığa girebilmeye tekabül eder. Günümüzdeki kullanımlarını kazanana kadar geçirdiği süreçler ve barındırdığı anlamlar birlikte değerlendirildiğinde, provanın dönüşüme sürekli devam ettiği söylenebilir. Prova yeniden düşünülme ve düzenlenmeye açıktır.

Metehan Özcan’ın Versus Art Project’de gerçekleşen sergisi Prova, Özcan’ın pratiğine geniş bir bakış sunar. Sergi mekânının farkı odalarına yayılan yeni üretimler, sanatçının geçmiş çalışmalarının, başka sanatçılara ait üretimlerin, arşivinin ve İstanbul-Ankara-İzmir dönemlerine ait kişisel izlerin aralarına sızar. 1978 tarihli bir vesikalık, istiflenmiş görseller, bir banyo fayansı, oda anahtarları, otel odası fotoğrafları, anonim mekânlar-tanıdık mekânlar, gizlenmiş hatıralar, geleceğe dair tahayyüller... Prova’da yer alan işlerin ve nesnelere yan yanadalığı özel ve kamusal olan arasında bir köprü kurar.

Prova bir kişisel sergi olmaktan ziyade Özcan’ın düşünme yöntemlerini açığa çıkartan, sürekli dağılıp yeniden kurulan bir hafıza alanı olarak kurgulanmıştır. Güncel işler ve arşivden çıkanlar, birer referans noktası olarak, sanatçının pratiğinin yeniden yorumlanabilmesine, görünmeyen anlatıların açığa çıkmasına olanak sağlar. Sergi aynı zamanda bir açık atölye olarak da ele alınabilir. Özcan’ın çalışmalarını yürüttüğü odanın mekâna yığıp, üretimini yine sergi alanında devam ettirerek imgenin farklı sunum ve sergilenme biçimlerinin deneyimlendiği bir mekân meydana getirir.

**-Merve Elveren**

\* Asuman Suner, Hong Kong-İstanbul: Şehri Şahsileştirmek (İstanbul: Metis Yayınları, 2018), 20.







**Metehan Özcan**

*Factory 1, 2023*

Archival Pigment Print on Hahnemühle 200 gr Matt Fibre  
Hahnemühle 200 gr Mat Fibre Kağıt Üzerine Arşivsel Pigment Baskı  
150 x 150 cm  
3 + 2 AP





**Metehan Özcan**

*Factory 2, 2023*

Archival Pigment Print on Hahnemühle 200 gr Matt Fibre

Hahnemühle 200 gr Mat Fibre Kağıt Üzerine Arşivsel Pigment Baskı

150 x 150 cm

3 + 2 AP





**Metehan Özcan**

*Things we keep, things we remove, 2023*

Archival Pigment Print on Hahnemühle 200 gr Matt Fibre

Hahnemühle 200 gr Mat Fibre Kağıt Üzerine Arşivsel Pigment Baskı

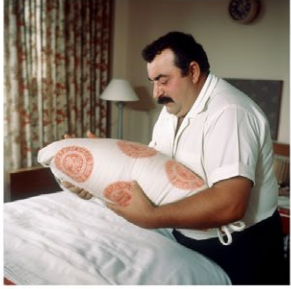
94 x 94 cm

3 + 1 AP









## Metehan Özcan

*B5B*, 2023

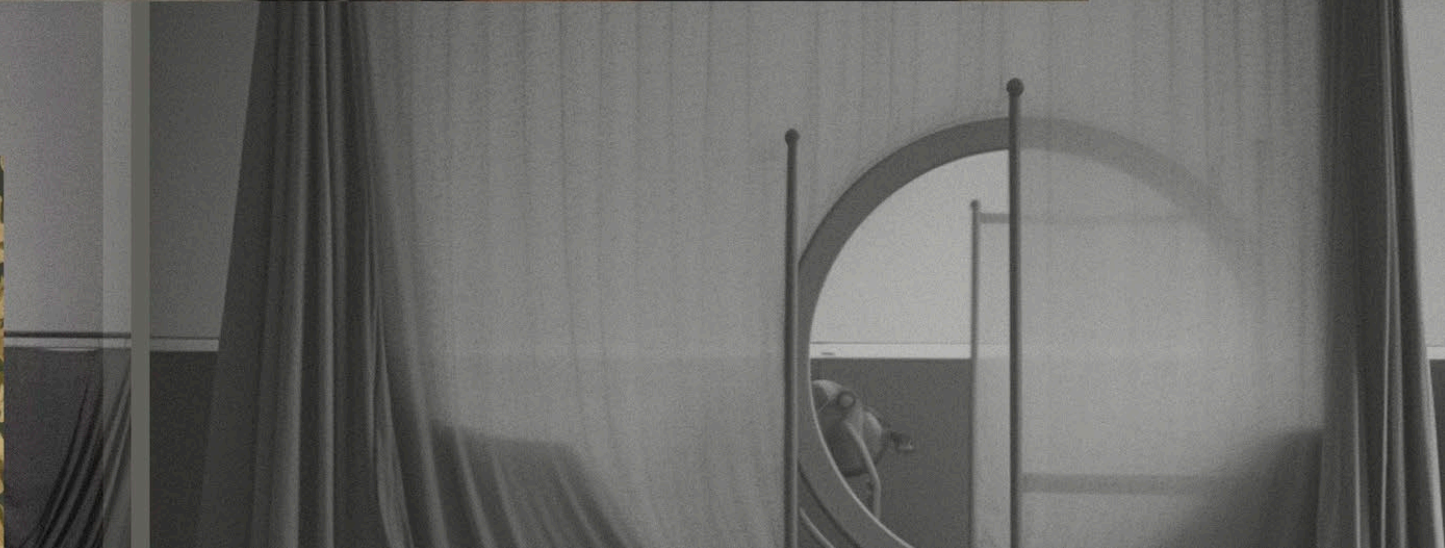
Archival Pigment Print on Hahnemühle 200 gr Matt Fibre, Wooden Frame

Hahnemühle 200 gr Mat Fibre Kağıt Üzerine Arşivsel Pigment Baskı, Ahşap Çerçeve

60 x 83 cm

3 + 2 AP







**Metehan Özcan**

*Security 1, 2023*

Archival Pigment Print on Hahnemühle 200 gr Matt Fibre, Wooden Frame  
Hahnemühle 200 gr Mat Fibre Kağıt Üzerine Arşivsel Pigment Baskı, Ahşap Çerçeve  
50 x 40 cm  
3 + 2 AP











**Metehan Özcan**

*Security 2*, 2023

Archival Pigment Print on Hahnemühle 200 gr Matt Fibre, Wooden Frame

Hahnemühle 200 gr Mat Fibre Kağıt Üzerine Arşivsel Pigment Baskı, Ahşap Çerçeve

50 x 40 cm

3 + 2 AP

**Metehan Özcan**

*Observation 1, 2023*

Digital Print on Paper

Kağıt Üzerine Dijital Baskı

40 x 40 cm

2 + 2 AP







Metehan Özcan, 'Rehearsal' Exhibition, 2023

Versus Art Project, Installation View





**Metehan Özcan**

*Butik Şölen*, 2023

Archival Pigment Print on Hahnemühle 200 gr Matt Fibre

Hahnemühle 200 gr Mat Fibre Kağıt Üzerine Arşivsel

Pigment Baskı

135 x 150 cm

3 + 2 AP

**Metehan Özcan**

*B7B, 2023*

Archival Pigment Print on Hahnemühle 200 gr Matt Fibre

Wooden Frame

Hahnemühle 200 gr Mat Fibre Kağıt Üzerine Arşivsel Pigment Baskı

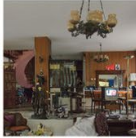
Ahşap Çerçeve

80 x 120 cm

3 + 2 AP



The image shows a large and modern interior space with a curved staircase and a long wooden bench. The space is characterized by its warm, natural wood tones and soft, ambient lighting. The architecture features clean lines and a mix of materials, creating a sophisticated and inviting atmosphere. The overall composition is balanced and visually appealing, capturing the essence of contemporary design.



1. The photograph captures a large and modern interior space with a curved staircase and a long wooden bench. The space is characterized by its warm, natural wood tones and soft, ambient lighting. The architecture features clean lines and a mix of materials, creating a sophisticated and inviting atmosphere. The overall composition is balanced and visually appealing, capturing the essence of contemporary design.
2. The image shows a large and modern interior space with a curved staircase and a long wooden bench. The space is characterized by its warm, natural wood tones and soft, ambient lighting. The architecture features clean lines and a mix of materials, creating a sophisticated and inviting atmosphere. The overall composition is balanced and visually appealing, capturing the essence of contemporary design.
3. The image shows a large and modern interior space with a curved staircase and a long wooden bench. The space is characterized by its warm, natural wood tones and soft, ambient lighting. The architecture features clean lines and a mix of materials, creating a sophisticated and inviting atmosphere. The overall composition is balanced and visually appealing, capturing the essence of contemporary design.
4. The image shows a large and modern interior space with a curved staircase and a long wooden bench. The space is characterized by its warm, natural wood tones and soft, ambient lighting. The architecture features clean lines and a mix of materials, creating a sophisticated and inviting atmosphere. The overall composition is balanced and visually appealing, capturing the essence of contemporary design.
5. The image shows a large and modern interior space with a curved staircase and a long wooden bench. The space is characterized by its warm, natural wood tones and soft, ambient lighting. The architecture features clean lines and a mix of materials, creating a sophisticated and inviting atmosphere. The overall composition is balanced and visually appealing, capturing the essence of contemporary design.
6. The image shows a large and modern interior space with a curved staircase and a long wooden bench. The space is characterized by its warm, natural wood tones and soft, ambient lighting. The architecture features clean lines and a mix of materials, creating a sophisticated and inviting atmosphere. The overall composition is balanced and visually appealing, capturing the essence of contemporary design.
7. The image shows a large and modern interior space with a curved staircase and a long wooden bench. The space is characterized by its warm, natural wood tones and soft, ambient lighting. The architecture features clean lines and a mix of materials, creating a sophisticated and inviting atmosphere. The overall composition is balanced and visually appealing, capturing the essence of contemporary design.
8. The image shows a large and modern interior space with a curved staircase and a long wooden bench. The space is characterized by its warm, natural wood tones and soft, ambient lighting. The architecture features clean lines and a mix of materials, creating a sophisticated and inviting atmosphere. The overall composition is balanced and visually appealing, capturing the essence of contemporary design.
9. The image shows a large and modern interior space with a curved staircase and a long wooden bench. The space is characterized by its warm, natural wood tones and soft, ambient lighting. The architecture features clean lines and a mix of materials, creating a sophisticated and inviting atmosphere. The overall composition is balanced and visually appealing, capturing the essence of contemporary design.
10. The image shows a large and modern interior space with a curved staircase and a long wooden bench. The space is characterized by its warm, natural wood tones and soft, ambient lighting. The architecture features clean lines and a mix of materials, creating a sophisticated and inviting atmosphere. The overall composition is balanced and visually appealing, capturing the essence of contemporary design.







**Metehan Özcan**

*Performans 2009, 2023*

Archival Pigment Print on Hahnemühle 200 gr Matt Fibre

Hahnemühle 200 gr Mat Fibre Kağıt Üzerine Arşivsel Pigment Baskı

45 x 40 cm

2 + 2 AP



**Metehan Özcan**

*Performans 1991, 2023*

Archival Pigment Print on Hahnemühle 200 gr Matt Fibre

Hahnemühle 200 gr Mat Fibre Kağıt Üzerine Arşivsel Pigment Baskı

65 x 60 cm

2 + 2 AP







**Metehan Özcan**

*Moodboard 01, 2023*

Archival Pigment Print on Hahnemühle 200 gr Matt Fibre, Wooden Frame

Hahnemühle 200 gr Mat Fibre Kağıt Üzerine Arşivsel Pigment Baskı, Ahşap Çerçeve

50 x 50 cm

3 + 1 AP

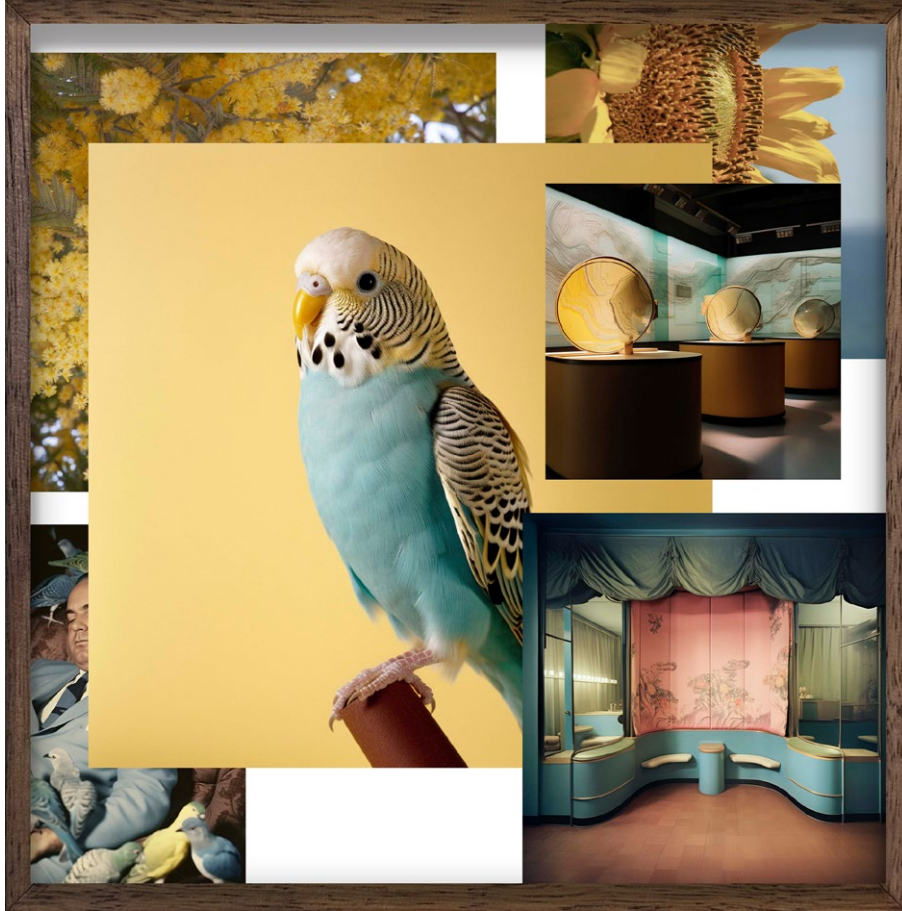
**Metehan Özcan**

*Moodboard 02, 2023*

Archival Pigment Print on Hahnemuhle 200 gr Matt Fibre, Wooden Frame  
Hahnemühle 200 gr Mat Fibre Kağıt Üzerine Arşivsel Pigment Baskı, Ahşap Çerçeve  
50 x 50 cm  
3 + 1 AP







**Metehan Özcan**

*Moodboard 03, 2023*

Archival Pigment Print on Hahnemühle 200 gr Matt Fibre, Wooden Frame

Hahnemühle 200 gr Mat Fibre Kağıt Üzerine Arşivsel Pigment Baskı, Ahşap Çerçeve

50 x 50 cm

3 + 1 AP

**Metehan Özcan**

*Tactile 02, 2023*

Archival Pigment Print on Hahnemühle 200 gr Matt Fibre, Wooden Frame

Hahnemühle 200 gr Mat Fibre Kağıt Üzerine Arşivsel Pigment Baskı, Ahşap Çerçeve

30 x 45 cm

3 + 1 AP







**Metehan Özcan**

*Tactile 01, 2023*

Archival Pigment Print on Hahnemühle 200 gr Matt Fibre, Wooden Frame

Hahnemühle 200 gr Mat Fibre Kağıt Üzerine Arşivsel Pigment Baskı, Ahşap Çerçeve

50 x 50 cm

3 + 1 AP

**Metehan Özcan**

*Tactile 03, 2023*

Archival Pigment Print on Hahnemühle 200 gr Matt Fibre, Wooden Frame  
Hahnemühle 200 gr Mat Fibre Kağıt Üzerine Arşivsel Pigment Baskı, Ahşap Çerçeve

18 x 18 cm

3 + 1 AP









**Metehan Özcan**

*Encounter 01, 2022*

Archival Pigment Print on Fine Art Paper, Wooden Frame

Fine Art Kağıt Üzerine Arşivsel Pigment Baskı, Ahşap Çerçeve

104 x 94 cm

3 + 1 AP

A realistic photo of hospital, prison, worker, school gymnasium, hall, mill, cage, and steel. A beautiful vivid twilight.  
 A museum of modern installation of student, paint, mural, bank, desk, office, lunchroom, school and dent. Sofa, seating, rugs, colorful,  
 and we work. An interior close-up of rooms, hospital, and steel. destruction, classroom, killing, windowsill, and shooting. Insulated, and inhuman.  
 A pic of floor, duct, vent, rooms, roof, dormitory, and school. In color film. Early dusk. A pic of cage, roof, rooms, mattress, hall, scales, duct,  
 and office. In the custom of historic color. Ambient light.



**Metehan Özcan**

*Encounter 02, 2022*

Archival Pigment Print on Hahnemühle 200 gr Matt Fibre, Wooden Framed  
Hahnemühle 200 gr Mat Fibre Kağıt Üzerine Arşivsel Pigment Baskı, Ahşap Çerçeve

35 x 30 cm

3 + 1 AP



A pit of dirt, dust, and brick, in the corner of historic color. Ambient Light.  
A rock photo of rock, dust, and brick, in the corner of historic color. Ambient Light.  
A pit of dirt, dust, and brick, in the corner of historic color. Ambient Light.



Metehan Özcan, 'Rehearsal' Exhibition, 2023  
Versus Art Project, Installation View



**Metehan Özcan**

*Sketch 01, 2023*

Archival Pigment Print on Hahnemühle 200 gr Matt Fibre  
Hahnemühle 200 gr Mat Fibre Kağıt Üzerine Arşivsel Pigment Baskı

57 x 88 cm

5 + 1 AP





**Metehan Özcan**

*Sketch 02, 2023*

Archival Pigment Print on Hahnemühle 200 gr Matt Fibre

Hahnemühle 200 gr Mat Fibre Kağıt Üzerine Arşivsel Pigment Baskı

57 x 88 cm

5 + 1 AP



**Metehan Özcan**

*Sketch 05, 2023*

Archival Pigment Print on Hahnemühle 200 gr Matt Fibre  
Hahnemühle 200 gr Mat Fibre Kağıt Üzerine Arşivsel Pigment Baskı

57 x 88 cm

5 + 1 AP





**Metehan Özcan**

*Dekor 08, 2022*

Archival Pigment Print on Hahnemühle 200 gr Matt Fibre, Wooden Frame

Hahnemühle 200 gr Mat Fibre Kağıt Üzerine Arşivsel Pigment Baskı, Ahşap Çerçeve

50 x 50 cm

3 + 1 AP

*\*not available*

20 x 20 cm

3 + 1 AP





Metehan Özcan, 'Scale' Exhibition, 2020  
Versus Art Project Istanbul, Installation View

**Metehan Özcan**

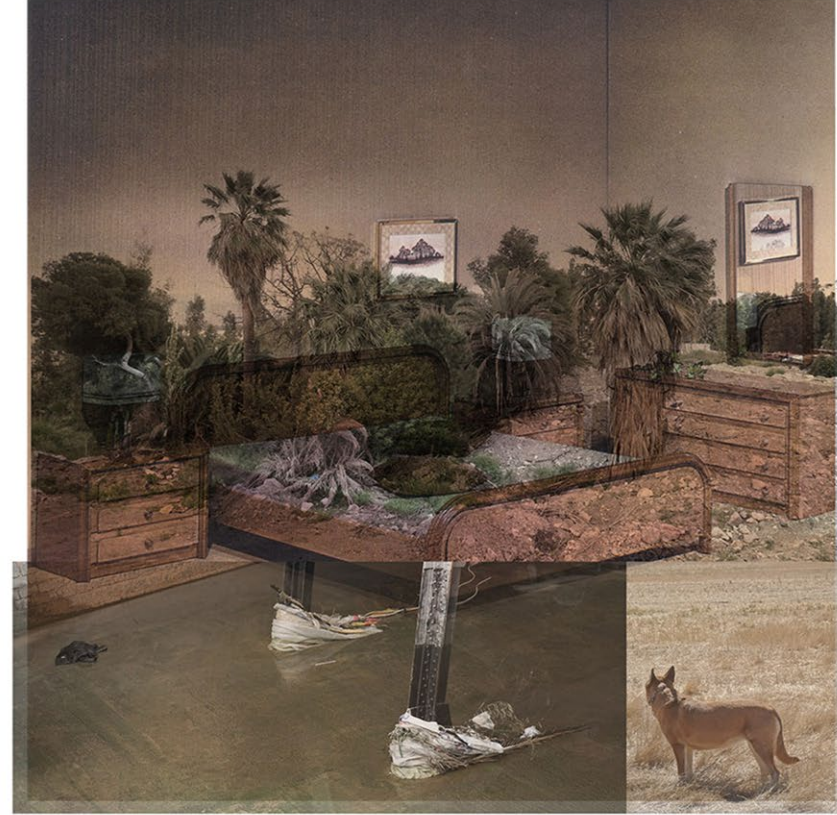
*Dekor 07*, 2019

Archival Pigment Print on Fine Art Paper, Wooden Frame

Fine Art Kağıt Üzerine Arşivsel Pigment Baskı, Ahşap Çerçeve

124 x 104 cm

3 + 1 AP







**Metehan Özcan**

*Dekor 04*, 2019

Archival Pigment Print on Fine Art Paper, Wooden Frame

Fine Art Kağıt Üzerine Arşivsel Pigment Baskı, Ahşap Çerçeve

66 x 90 cm

3 + 1 AP



Metehan Özcan, 'Dekor' Exhibition, 2019  
Versus Art Project Istanbul, Installation View





**Metehan Özcan**

*Dekor 05, 2017*

Archival Pigment Print on Fine Art Paper, Wooden Frame

Fine Art Kağıt Üzerine Arşivsel Pigment Baskı, Ahşap Çerçeve

200 x 136 cm

1 + 1 AP



Metehan Özcan, 'Dekor' Exhibition, 2019  
Versus Art Project Istanbul, Installation View



**Metehan Özcan**

*Dekor 01, 2019*

Archival Pigment Print on Fine Art Paper, Wooden Frame

Fine Art Kağıt Üzerine Arşivsel Pigment Baskı, Ahşap Çerçeve

100 x 71 cm

3 + 1 AP





**Metehan Özcan**

*Dekor 02*, 2019

Archival Pigment Print on Fine Art Paper, Wooden Frame

Fine Art Kağıt Üzerine Arşivsel Pigment Baskı, Ahşap Çerçeve

100 x 71 cm

3 + 1 AP



**Metehan Özcan**

*Dekor 03*, 2019

Archival Pigment Print on Fine Art Paper, Wooden Frame  
Fine Art Kağıt Üzerine Arşivsel Pigment Baskı, Ahşap Çerçeve

100 x 71 cm

3 + 1 AP





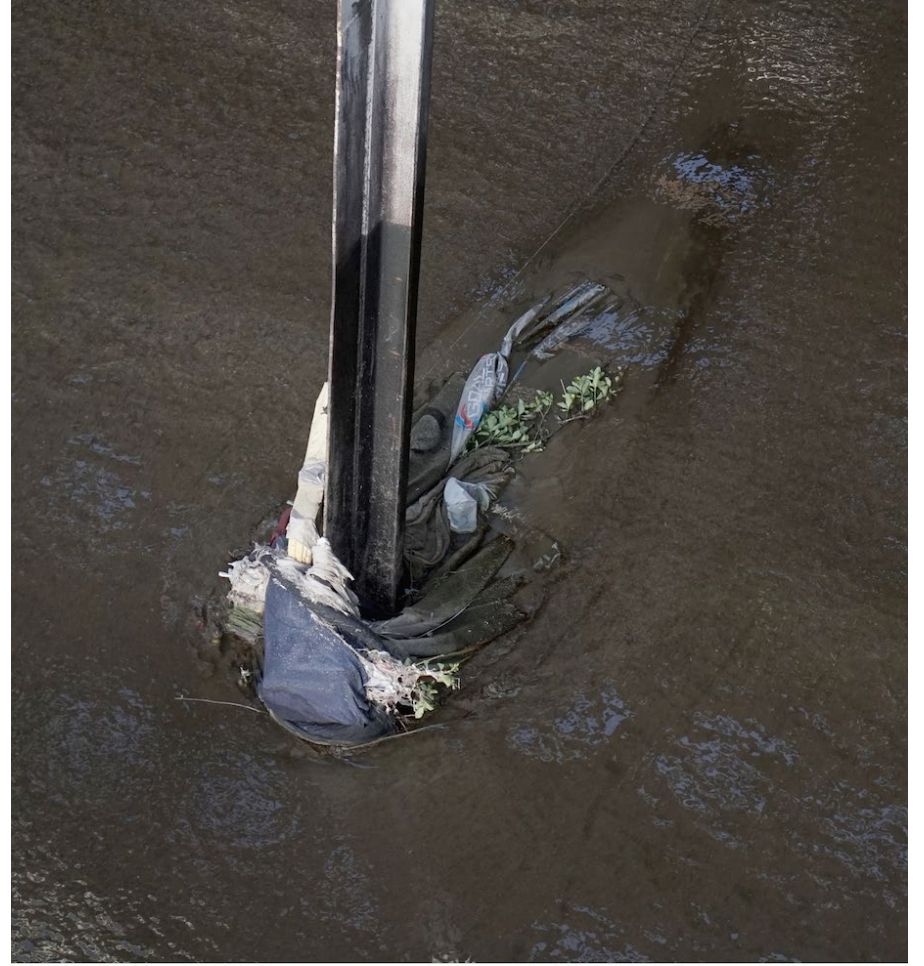
**Metehan Özcan**

*KR15, 2019*

Pigment Print on Paper  
Kağıt Üzerine Pigment Baskı

85 x 65 cm

4/20



**TAKSİLER - TERZİLER**





**Metehan Özcan**

*ALI*, 2018

Archival Pigment Print on Fine Art Paper, Wooden Frame

Fine Art Kağıt Üzerine Arşivsel Pigment Baskı, Ahşap Çerçeve

18 x 18 cm (print) 60 x 50 cm (frame)

1 + 1 AP

**Metehan Özcan**

*B03*, 2013

Archival Pigment Print on Fine Art Paper, Wooden Frame

Fine Art Kağıt Üzerine Arşivsel Pigment Baskı, Ahşap Çerçeve

60 x 73 cm

3 + 1 AP





**Metehan Özcan**

*B05*, 2013

Archival Pigment Print on Fine Art Paper, Wooden Frame

Fine Art Kağıt Üzerine Arşivsel Pigment Baskı, Ahşap Çerçeve

60 x 82 cm

3 + 1 AP



**Metehan Özcan**

*B08*, 2013

Archival Pigment Print on Fine Art Paper, Wooden Frame  
Fine Art Kağıt Üzerine Arşivsel Pigment Baskı, Ahşap Çerçeve  
60 x 83 cm  
3 + 1 AP





Metehan Özcan, 'Dekor' Exhibition, 2019  
Versus Art Project Istanbul, Installation View

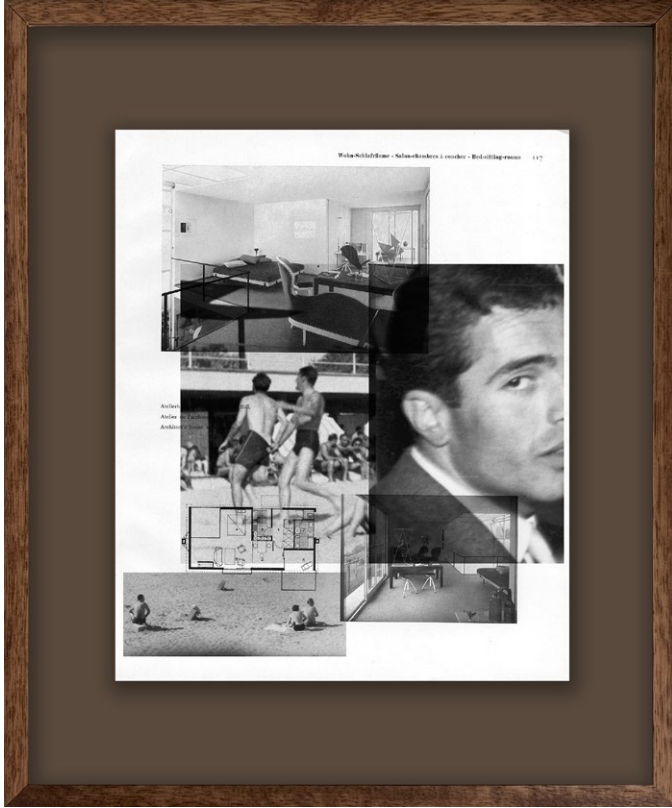
**Metehan Özcan**

*A06, 2013*

Archival Pigment Print on Found Paper, Wooden Frame  
Bulutlu Kağıt Üzerine Arşivsel Pigment Baskı, Ahşap Çerçeve  
42 x 35 cm  
Unique







**Metehan Özcan**

*A09*, 2013

Archival Pigment Print on Found Paper, Wooden Frame

Bulutlu Kağıt Üzerine Arşivsel Pigment Baskı, Ahşap Çerçeve

42 x 35 cm

Unique

**Metehan Özcan**

*A11, 2013*

Archival Pigment Print on Found Paper, Wooden Frame  
Bulutnu Kağıt Üzerine Arşivsel Pigment Baskı, Ahşap Çerçeve

42 x 35 cm

Unique





**Metehan Özcan**

**A12, 2013**

Archival Pigment Print on Found Paper, Wooden Frame

Buluntu Kağıt Üzerine Arşivsel Pigment Baskı, Ahşap Çerçeve

35 x 42 cm

Unique



**Metehan Özcan**

*A13*, 2013

Archival Pigment Print on Found Paper, Wooden Frame  
Bulutlu Kağıt Üzerine Arşivsel Pigment Baskı, Ahşap Çerçeve

42 x 35 cm

Unique





**Metehan Özcan**

**A14, 2013**

Archival Pigment Print on Found Paper, Wooden Frame

Bulutlu Kağıt Üzerine Arşivsel Pigment Baskı, Ahşap Çerçeve

35 x 42 cm

Unique

**Metehan Özcan**

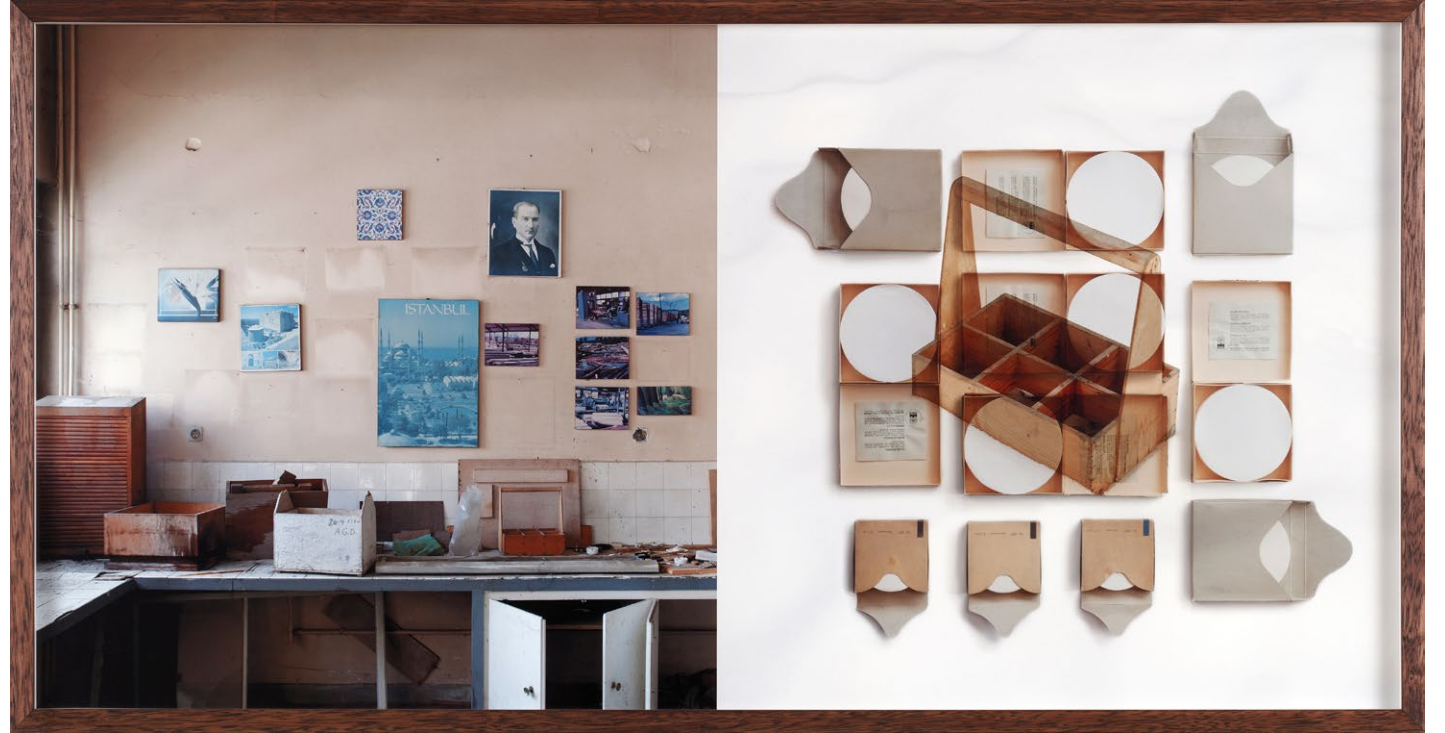
*RB01, 2012*

Archival Pigment Print on Fine Art Paper, Wooden Frame

Fine Art Kağıt Üzerine Arşivsel Pigment Baskı, Ahşap Çerçeve

50 x 100 cm

3 + 1 AP







**Metehan Özcan**

*Family Park*, 2011

Archival Pigment Print on Hahnemühle 200 gr Matt Fibre Mounted on Dibond  
Aluminyum Dibonda Sıvalı Hahnemühle 200 gr Mat Fibre Kağıt Üzerine Arşivsel  
Pigment Baskı

Ø 100 cm

3 + 1 AP

**Metehan Özcan**

*Untitled 20*, 2008

Print on Coated Paper Mounted on Plexi and Dibond

Diplex Baskı

Archival Pigment Print on Hahnemühle 200 gr Matt Fibre

Hahnemühle 200 gr Matt Fibre Kağıt Üzerine Arşivsel Pigment Baskı

60 x 100 cm

3 + 1 AP





**Metehan Özcan**

*Untitled 25*, 2008

Achival Pigment Print on Hahnemühle 200 gr Matt Fibre

Hahnemühle 200 gr Matt Fibre Kağıt Üzerine Arşivsel Pigment Baskı

60 x 60 cm

6 + 1 AP



**Metehan Özcan**

*Untitled 29, 2007*

Achival Pigment Print on Hahnemühle 200 gr Matt Fibre  
Hahnemühle 200 gr Matt Fibre Kağıt Üzerine Arşivsel Pigment Baskı

60 x 60 cm

6 + 1 AP





**Metehan Özcan**

*Untitled 31*, 2008

Archival Pigment Print on Fine Art Paper, Wooden Frame

Fine Art Kağıt Üzerine Arşivsel Pigment Baskı, Ahşap Çerçeve

60 x 60 cm

6 + 1 AP





**Curator:** Merve **Elveren**

**Assisant Curator:** Görkem **İmrek**

**Exhibition Team:** Zeynep **Keçelioğlu Murray**  
Leyla **Ünsal Gündüz**  
Mert **Ünsal**

**Guest Artists:** Tuğçe **Akay**  
Cenkhan **Aksoy**  
Umut **Altıntaş**  
Gizem Hız **Atıntaş**  
Tufan **Baltalar**  
Pelin **Derviş**  
Duygun **Erim**  
Boran **Güney**  
Ege **Kanar**  
Cansu Pelin **İşbilen**  
Melek **Özcan**  
Sevim **Sancaktar**  
Selim **Süme**  
Leyla **Ünsal Gündüz**  
Merve **Ünsal**  
Saliha **Yavuz**  
Emre **Yıldız**  
Şebnem **Yücel**

**Special Thanks:** Hatice **Cenik**  
Berkan **Çanta**  
Sinem **Dişli**  
Cumhur **Ekiz**  
Örsan **Karakuş**  
Sani **Karamustafa**  
Mustafa **Horasan**  
Ömer **Pekin**  
Sevim **Sancaktar**  
Selim **Süme**  
Alper **Tokyürek**  
Canan **Ünsal**

**Sponsor:** **JOTUN**  
**TEPTA**







## METEHAN ÖZCAN (b.1975, Istanbul)

Metehan Özcan completed his undergraduate education at Bilkent University, Department of Interior Architecture, and completed his master's degree on Visual Communication Design at Bilgi University.

Özcan, who focuses on the ways of living and representation of the modernist space in his works, describes the alienation of people in their environment through the intertwining of the private and the public. Considering memory as the representation of identity, the artist observes cultural codes in his works and opens discussions on ownership and belonging.

Working as a part-time lecturer at various universities, Özcan lives and works in Istanbul.

### EDUCATION

- |           |  |
|-----------|--|
| 2000–2002 | Visual Communication and Design Programme, MFA<br>Bilgi University, Istanbul, Turkey                   |
| 1996–2000 | Interior Architecture and Environmental Design, Photography, BFA<br>Bilkent University, Ankara, Turkey |
| 1993–1996 | Pre-Architecture Study<br>School of Polytechnic Studies, Semo, St. Louis, USA                          |

### SOLO EXHIBITIONS

- |      |   |
|------|---|
| 2023 | <i>Rehearsal</i> (curator: Melve Elveren), Versus Art Project, Istanbul, Turkey         |
| 2019 | <i>Dekor</i> , Versus Art Project, Istanbul, Turkey                                     |
| 2013 | <i>Illustrated Information</i> (curator: Merve Ünsal), Elipsis Gallery, Istanbul Turkey |
| 2010 | <i>Vacuum</i> , Operation Room, American Hospital, Istanbul, Turkey                     |

### GROUP EXHIBITIONS & PROJECTS

- |      |   |
|------|---|
| 2023 | <i>If lost, remember</i> (curator: Leyla Ünsal), Feshane-i Amire, Istanbul, Turkey                                |
| 2023 | <i>New Horizon</i> , Monoco.io, Bilsart, Istanbul, Turkey   |
| 2023 | <i>Time is Love</i> (curator: Ayşegül Sönmez), Hüsrev Kethüda Hammam, Istanbul Turkey                             |
| 2022 | <i>Eloquent Things</i> (curator: Sevim Sancaktar), Milli Reasürans Art Gallery Istanbul, Turkey                   |
| 2022 | <i>Uncanny</i> , Meteor Balat Kültürevi, Bursa, Turkey  |
| 2022 | <i>Undertow</i> , Online Exhibition, Versus Art Project, Istanbul, Turkey   |
| 2021 | <i>Finding a cure in Istanbul</i> (curator: Melis Bektaş), Yaklaşım Tüneli, Istanbul Turkey                       |
| 2020 | <i>Scale</i> (curator: Ezgi Bakçay), Versus Art Project, Istanbul, Turkey   |
| 2020 | <i>Chrystal Chateau</i> (curator: Can Akgümüş), Evliyagil Museum, Ankara, Turkey                                  |
| 2019 | <i>Authors of the City</i> , Hayy Open Space, Izmir, Turkey   |
| 2018 | <i>Living and producing in Izmir: Authors of the City</i> , Studio-X, Istanbul, Turkey                            |
| 2018 | <i>Metaphorical Space</i> (organiser: Pinar Öğenci), MARSistanbul, Istanbul, Turkey                               |
| 2018 | <i>Monomyth</i> (curator: Deniz Artun), Galeri Nev, Ankara, Turkey  |
| 2016 | <i>Design Chronology of Turkey</i> (organized by Pelin Derviş), 3rd Istanbul Design Biennial, Istanbul, Turkey    |
| 2016 | <i>Outside the sentence there was a city</i> (curator: November Paynter) SALTUlus Ankara, Turkey                  |
| 2016 | <i>Deadlands</i> (curator: Rotem Rozental), NURTUREart, New York, NY  |
| 2015 | <i>Future Queer</i> (curator: Övül Durmuşoğlu & Aylime Aslı Demir), ARK Culture, Istanbul, Turkey                 |
| 2015 | <i>Vocabulary of Hospitality</i> (curator: Merve Bedir), Studio-X, Istanbul, Turkey                               |
| 2014 | <i>Places of Memory</i> (coordinator: Pelin Derviş), Venice Architecture Biennale Turkish Pavilion, Venice, Italy |
| 2014 | <i>Summer Resort for a Song</i> (curator: Borga Kantürk), Depo Istanbul, Istanbul Turkey                          |
| 2013 | <i>Please Do Not Disturb</i> (curator: Ertuğ Uçar), Istanbul Modern, Istanbul, Turkey                             |
| 2009 | <i>Turn On</i> (curator: Özkan Cangüven), Slag Gallery, New York, USA   |

### PUBLISHED BOOKS

- |      |  |
|------|--|
| 2019 | Illustrated Information - Appendix, KartonKitap x Metahan Özcan, border_less, Art Book Days Book Fund Winner |
|------|--|



# VERSUS ART PROJECT

Kuloglu Mah. Gazeteci Erol Dernek Sok.  
No.11/3 Hanif Han 34433  
Beyoglu, Istanbul, Turkey

+90 (212) 258 14 14

[info@versusartproject.com](mailto:info@versusartproject.com)  
[www.versusartproject.com](http://www.versusartproject.com)